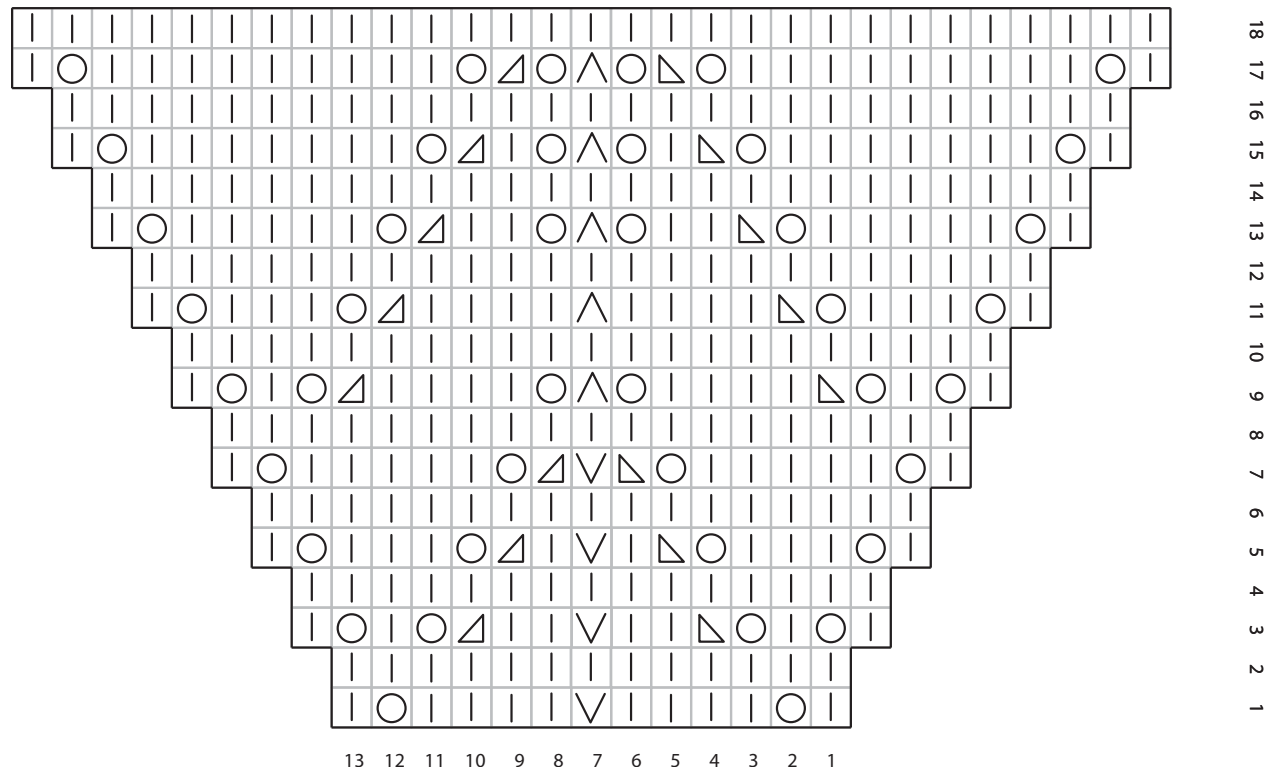


In the Carnivale Hat Pattern from Knitting Millinery, there is a mistake in the first 7 rows of the brim chart.

In rows 1, 3, 5 & 7, the VDD actually SHOULD be a Slip 1 st. Below is the corrected text and the corrected chart.

### *Carnivale Brim Chart*

#### Brim Chart



Rnd 1: [K1, YO, k4, **Sl 1**, k4, YO, k1] rep to end of rnd..

Rnd 2 & all even rounds: Knit all sts.

Rnd 3: [K1, YO, k1, YO, k2tog-L, k2, **Sl 1**, k2, k2tog-R, YO, k1, YO, k1] rep to end of rnd..

Rnd 5: [K1, YO, k3, YO, k2tog-L, k1, **Sl 1**, k1, k2tog-R, YO, k3, YO, k1] rep to end of rnd..

Rnd 7: [K1, YO, k5, YO, k2tog-L, **Sl 1**, k2tog-R, YO, k5, YO, k1] rep to end of rnd..

Rnd 9: [K1, YO, k1, YO, k2tog-L, k4, YO, VDD, YO, k4, k2tog-R, YO, k1, YO, k1] rep to end of rnd..

Rnd 11: [K1, YO, k3, YO, k2tog-L, k3, YO, VDD, YO, k3, k2tog-R, YO, k3, YO, k1] rep to end of rnd..

Rnd 13: [K1, YO, k5, YO, k2tog-L, k2, YO, VDD, YO, k2, k2tog-R, YO, k5, YO, k1] rep to end of rnd..

Rnd 15: [K1, YO, k7, YO, k2tog-L, k1, YO, VDD, YO, k1, k2tog-R, YO, k7, YO, k1] rep to end of rnd..

Rnd 17: [K1, YO, k9, YO, k2tog-L, YO, VDD, YO, k2tog-R, YO, k9, YO, k1] rep to end of rnd..